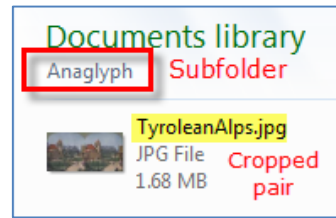
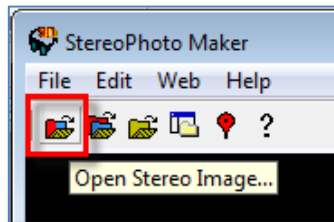
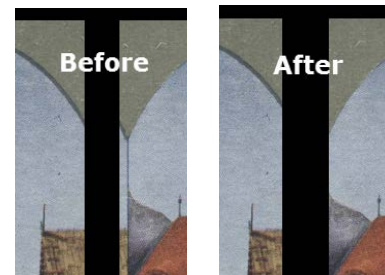


Create Anaglyph Image in StereoPhoto Maker

1) Open StereoPhoto Maker (**stphmkre.exe**) and open a side-by-side stereo image from the **Anaglyph** folder .

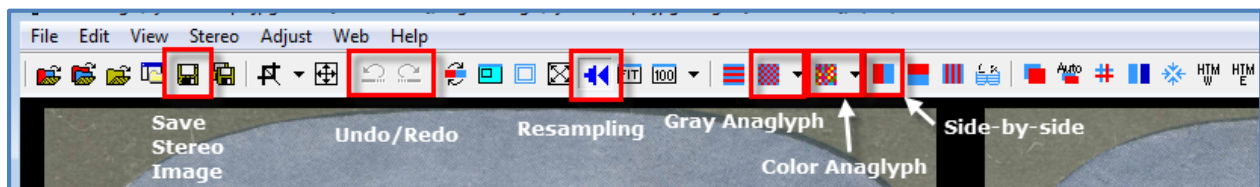


2) When the side-by-side image is open, note whether the break between the left and right images is in the correct place. If not, tap the left or right arrow on the keyboard until the sides of both images are correctly aligned in their boxes.



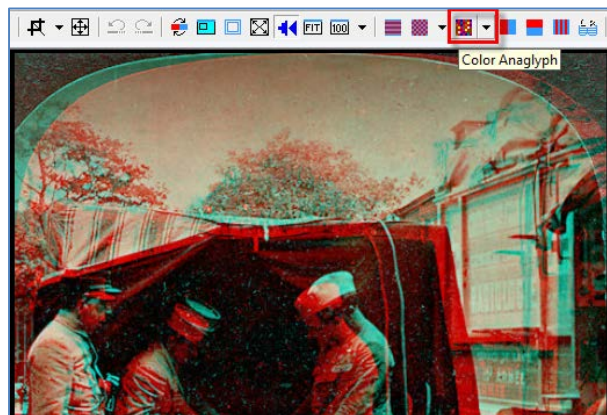
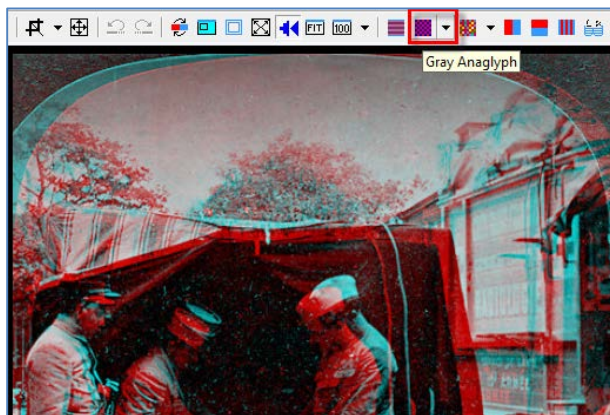
In most cases, **Resampling** will give the best image quality; click the toolbar button to turn it off and on.

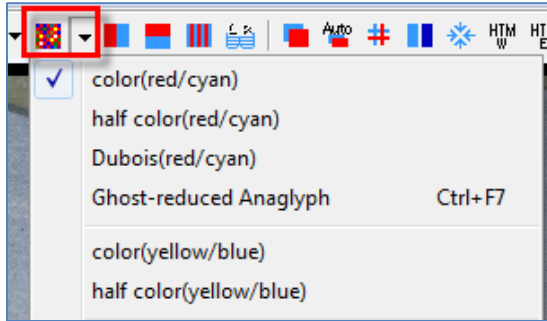
StereoPhoto Maker Toolbar



3) Click on the down arrow beside the **Color Anaglyph** icon and select the best option for the current image (see below). *DO NOT* use any 'yellow/blue' options. *Please be aware that the color of any anaglyph image viewed through 3D glasses will NOT be the same as an original color image.*

Black and white originals may also look best when using the Color instead of Gray Anaglyph option; once a decision is made, consistently use the same selection for all items in a collection!





In most cases, the 'color(red/cyan)' selection is best.

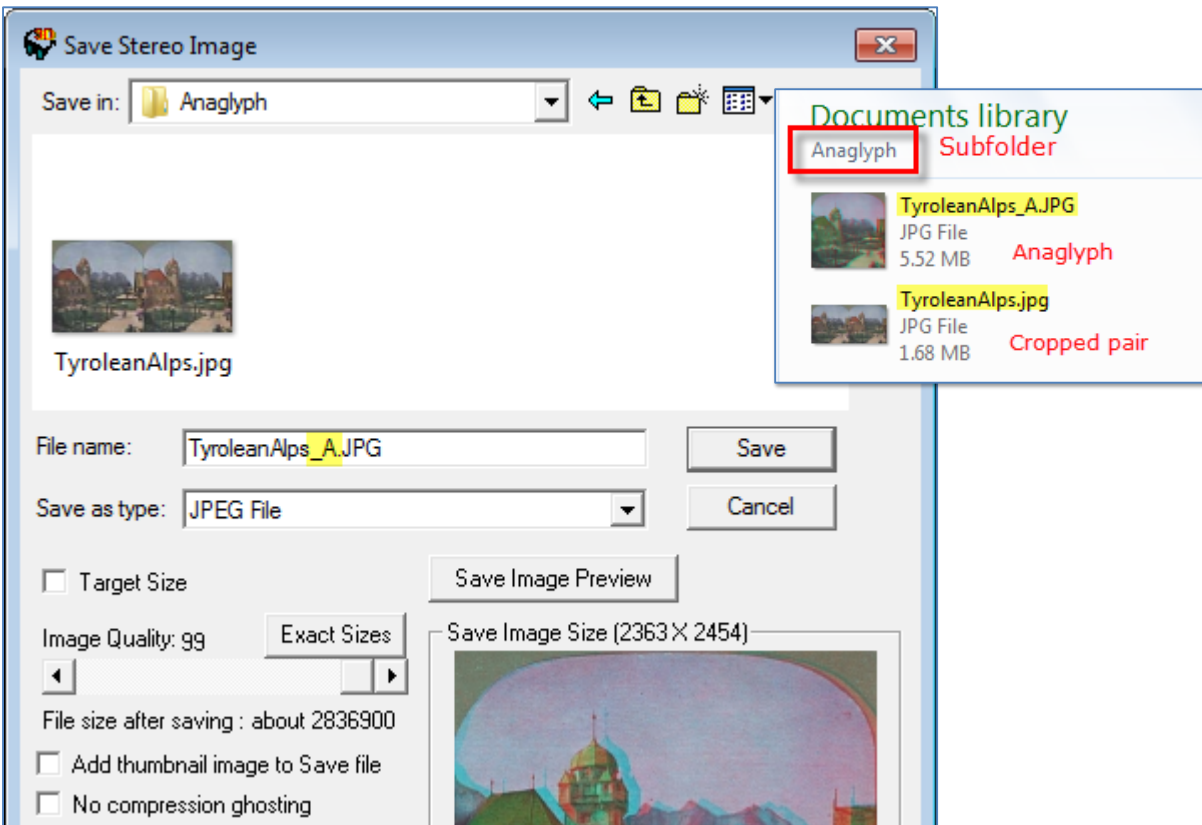
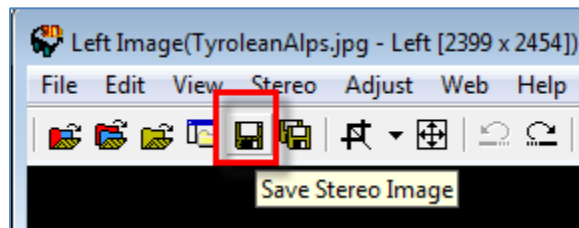
However, 'half color' may be better for very bright colors, or 'Dubois' for reds.

If none of these options produces a sufficiently clear anaglyph image, try 'Ghost-reduced Anaglyph' (see **Help > Help(WEB)** for information).

OPTIONAL: While the anaglyph image is displayed onscreen, you may wish to fine-tune the alignment by pressing the left or right arrow keys on the keyboard. Wear red/cyan 3D glasses and identify a portion of the image that should appear closest, then adjust until the perception of depth is most pronounced.

5) When finished, save the anaglyph (stereo) image in the **Anaglyph** subfolder, using the same filename and adding **_A** (underscore, capital A) at the end.

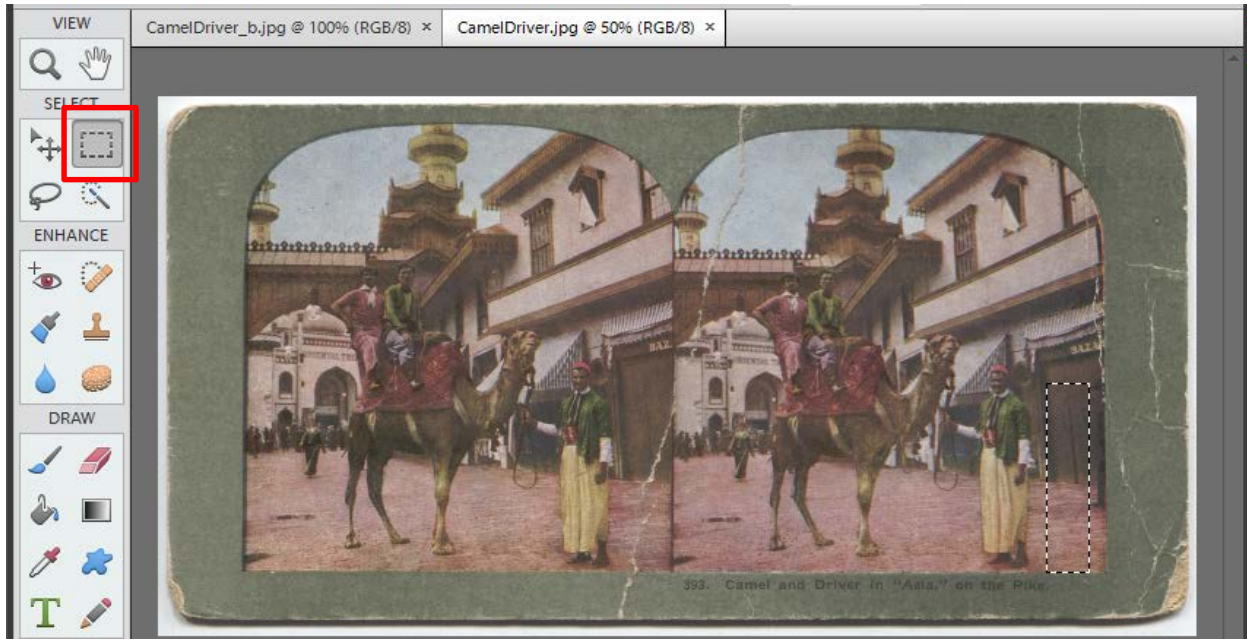
This anaglyph file will be uploaded to Omeka, in addition to the resized front and back views in the Upload folder.



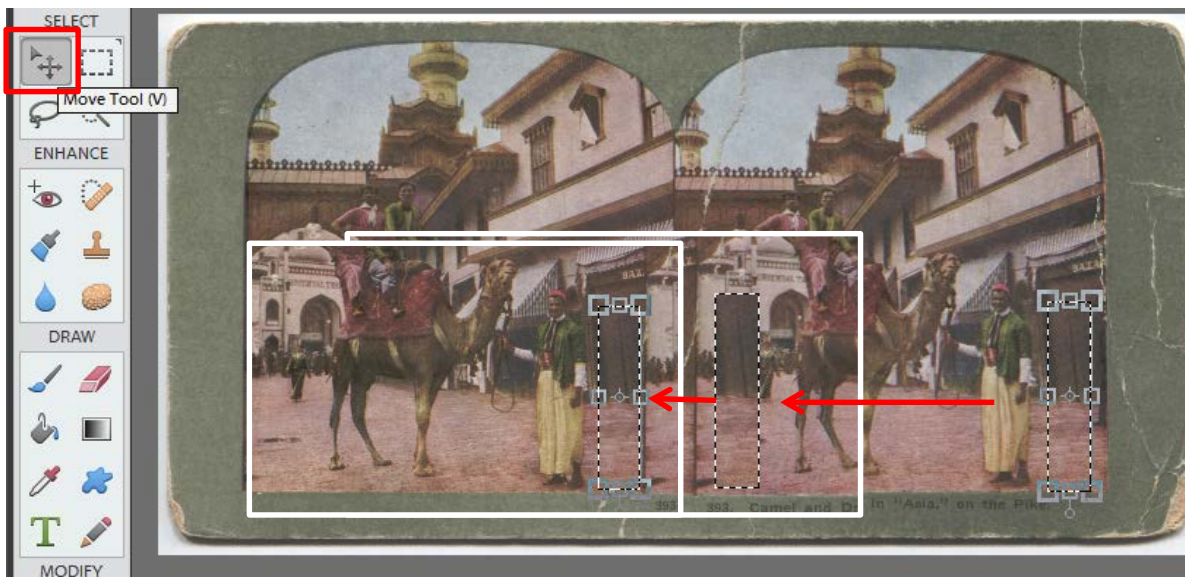
Fix flaws in Stereograph images in Photoshop Elements 12

If your stereograph has flaws, you may want to repair the flaw by copying and pasting a more perfect image. This should only be done to the **Anaglyph** version of your file.

Select the area to be copied.



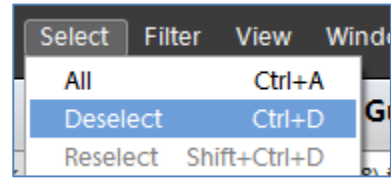
Click the Move tool and press the Alt key, then drag the selection...



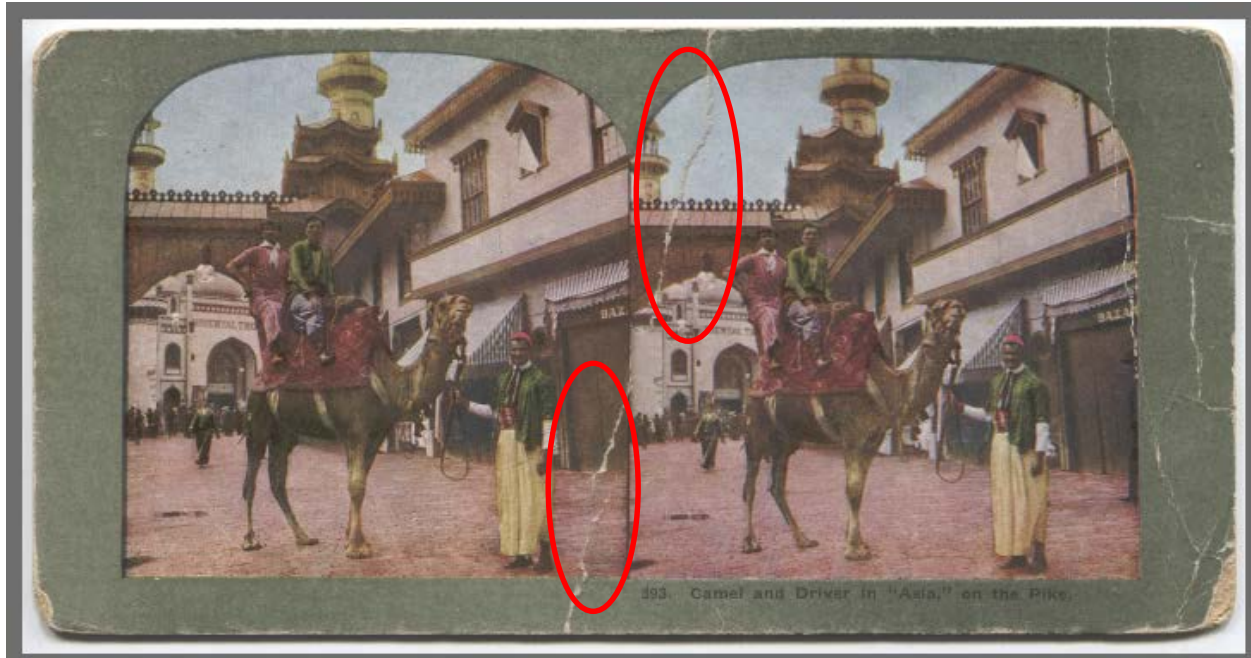
...to the other side to cover up breaks or scratches.

When satisfied, press Ctrl + D to deselect. Repeat with any other areas to be corrected.

Note that the far right and far left edges on stereo pairs are different, so cannot be fixed with this technique.



Before:



After:



Now the image pair can be cropped and used to create an anaglyph.

